

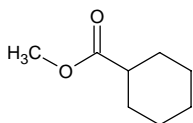
# methyl cyclohexylcarboxylate

## メチル シクロヘキシルカルボキシレート

Formula C<sub>8</sub>H<sub>14</sub>O<sub>2</sub>

Mol. Wt. 142.20

CAS No. 4630-82-4



SEQ No. 1641 エステル類

FEMA No. 3568

JECFA No. 962

	JFFMA	JECFA	FCC
Chemical name	methyl cyclohexylcarboxylate	Methyl cyclohexanecarboxylate	
Content (NLT)	98.0 % (GC)	98 %	
Refractive index	1.439-1.447 (n <sub>20D</sub> )	1.439-1.447 (n <sub>20D</sub> )	
Specific gravity	0.990-0.999 (d <sub>25/25</sub> )	0.990-0.999 (d <sub>25/25</sub> )	
Acid value (NMT)	2.0	2.0	
Melting/Congeealing point			
Angular/Specific rotation			
Heavy metals (NMT)			
Solubility in ethanol		Miscible at room temperature	
Other requirements			
Identification*	IR : 1,3,5,6 MS : 3,4,5 NMR : 1,3,6	IR NMR	

### \*References

- 1: Joint FAO/WHO Expert Committee on Food Additive (JECFA)
- 2: Food Chemicals Codex (FCC)
- 3: 有機化合物のスペクトルデータベース SDBS(独立行政法人産業技術総合研究所)
- 4: Wiley's Registry of Mass spectral Database
- 5: NIST/EPA/NIH Mass Spectral Library
- 6: Sigma-Aldrich