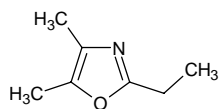


## 2-ethyl-4,5-dimethyloxazole

### 2-エチル-4,5-ジメチルオキサゾール

Formula C<sub>7</sub>H<sub>11</sub>NO

Mol. Wt. 125.17



CAS No. 53833-30-0

SEQ No. 635 エーテル類

FEMA No. 3672

JECFA No. 1555

	JFFMA	JECFA	FCC
Chemical name	2-ethyl-4,5-dimethyloxazole	2-Ethyl-4,5-dimethyloxazole	
Content (NLT)	96.0 % (Chem)	99 %	
Refractive index	1.441-1.451 (n <sub>20D</sub> )	1.454-1.460 (n <sub>20D</sub> )	
Specific gravity	0.943-0.953 (d <sub>20/20</sub> )	1.474-1.480 (d <sub>25/25</sub> )	
Acid value (NMT)			
Melting/Congeealing point			
Angular/Specific rotation			
Heavy metals (NMT)			
Solubility in ethanol		Soluble	
Other requirements			
Identification*	IR : MS :4,5 NMR :1	NMR	

#### \*References

- 1: Joint FAO/WHO Expert Committee on Food Additive (JECFA)
- 2: Food Chemicals Codex (FCC)
- 3: 有機化合物のスペクトルデータベース SDBS(独立行政法人産業技術総合研究所)
- 4: Wiley's Registry of Mass spectral Database
- 5: NIST/EPA/NIH Mass Spectral Library
- 6: Sigma-Aldrich