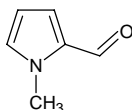


# 1-methyl-2-pyrrolylcarbaldehyde

## 1-メチル-2-ピロリルカルバルデヒド

Formula C<sub>6</sub>H<sub>7</sub>NO

Mol. Wt. 109.13



CAS No. 1192-58-1

SEQ No. 1940 芳香族アルデヒド類

FEMA No. 4332

JECFA No.

	JFFMA	JECFA	FCC
Chemical name	1-methyl-2-pyrrolylcarbaldehyde		
Content (NLT)	90.0 % (GC)		
Refractive index	1.555-1.565 (n <sub>20D</sub> )		
Specific gravity	1.072-1.082 (d <sub>20/20</sub> )		
Acid value (NMT)	10.0		
Melting/Congeealing point			
Angular/Specific rotation			
Heavy metals (NMT)			
Solubility in ethanol			
Other requirements			
Identification*	IR :3,6 MS :3,4,5 NMR :6		

### \*References

- 1: Joint FAO/WHO Expert Committee on Food Additive (JECFA)
- 2: Food Chemicals Codex (FCC)
- 3: 有機化合物のスペクトルデータベース SDBS(独立行政法人産業技術総合研究所)
- 4: Wiley's Registry of Mass spectral Database
- 5: NIST/EPA/NIH Mass Spectral Library
- 6: Sigma-Aldrich