

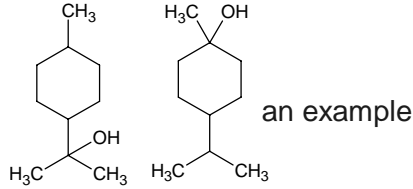
# dihydroterpineol

## ジヒドロテルピネオール

Formula C<sub>10</sub>H<sub>20</sub>O

Mol. Wt. 156.27

CAS No. 21129-27-1



SEQ No. 脂肪族高級アルコール類

FEMA No.

JECFA No.

	JFFMA	JECFA	FCC
Chemical name	dihydroterpineol		
Content (NLT)	95.0 % (GC) sum of isomers		
Refractive index	1.460-1.475 (n <sub>20D</sub> )		
Specific gravity	0.905-0.915 (d <sub>20/20</sub> )		
Acid value (NMT)			
Melting/Congeealing point			
Angular/Specific rotation			
Heavy metals (NMT)			
Solubility in ethanol			
Other requirements			
Identification*	IR :		
	MS :4,5		
	NMR :		

### \*References

- 1: Joint FAO/WHO Expert Committee on Food Additive (JECFA)
- 2: Food Chemicals Codex (FCC)
- 3: 有機化合物のスペクトルデータベース SDBS(独立行政法人産業技術総合研究所)
- 4: Wiley's Registry of Mass spectral Database
- 5: NIST/EPA/NIH Mass Spectral Library
- 6: Sigma-Aldrich