

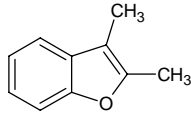
2,3-dimethylbenzofuran

2,3-ジメチルベンゾフラン

Formula C₁₀H₁₀O

Mol. Wt. 146.19

CAS No. 3782-00-1



SEQ No. 656 フェノールエーテル類

FEMA No. 3535

JECFA No. 1495

	JFFMA	JECFA	FCC
Chemical name	2,3-dimethylbenzofuran	2,3-Dimethylbenzofuran	
Content (NLT)	98.0 % (Chem)	97 %	
Refractive index	1.552-1.558 (n _{20D})	1.554-1.563 (n _{20D})	
Specific gravity	1.038-1.044 (d _{20/20})	1.031-1.037 (d _{25/25})	
Acid value (NMT)		1.0	
Melting/Congeealing point			
Angular/Specific rotation			
Heavy metals (NMT)			
Solubility in ethanol		Soluble	
Other requirements			
Identification*	IR : MS :4 NMR :1	NMR	

*References

- 1: Joint FAO/WHO Expert Committee on Food Additive (JECFA)
- 2: Food Chemicals Codex (FCC)
- 3: 有機化合物のスペクトルデータベース SDBS(独立行政法人産業技術総合研究所)
- 4: Wiley's Registry of Mass spectral Database
- 5: NIST/EPA/NIH Mass Spectral Library
- 6: Sigma-Aldrich