

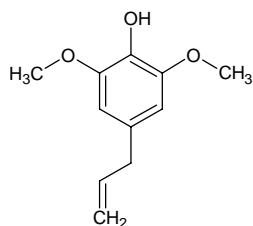
4-allyl-2,6-dimethoxyphenol

4-アリル-2,6-ジメトキシフェノール

Formula C₁₁H₁₄O₃

Mol. Wt. 194.23

CAS No. 6627-88-9



SEQ No. 132 フェノール類

FEMA No. 3655

JECFA No. 726

	JFFMA	JECFA	FCC
Chemical name	4-allyl-2,6-dimethoxyphenol	4-Allyl-2,6-dimethoxyphenol	
Content (NLT)	97.0 % (GC)	98 %	
Refractive index	1.544-1.553 (n _{20D})	1.548-1.550 (n _{20D})	
Specific gravity	1.114-1.124 (d _{20/20})	1.089-1.095 (d _{25/25})	
Acid value (NMT)			
Melting/Congeealing point			
Angular/Specific rotation			
Heavy metals (NMT)			
Solubility in ethanol		miscible	
Other requirements			
Identification*	IR :1,6 MS :4,5 NMR :6	IR	

*References

- 1: Joint FAO/WHO Expert Committee on Food Additive (JECFA)
- 2: Food Chemicals Codex (FCC)
- 3: 有機化合物のスペクトルデータベース SDBS(独立行政法人産業技術総合研究所)
- 4: Wiley's Registry of Mass spectral Database
- 5: NIST/EPA/NIH Mass Spectral Library
- 6: Sigma-Aldrich