

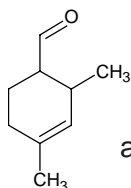
dimethylcyclohexenylcarbaldehyde

ジメチルシクロヘキセニルカルバルデヒド

Formula C₉H₁₄O

Mol. Wt. 138.21

CAS No. 68737-61-1



an example

SEQ No. 670 脂肪族高級アルデヒド類

FEMA No.

JECFA No.

	JFFMA	JECFA	FCC
Chemical name	dimethylcyclohexenylcarbaldehyde		
Content (NLT)	96.0 % (GC) sum of 2,4- and 3,5-		
Refractive index	1.468-1.478 (n _{20D})		
Specific gravity	0.932-0.942 (d _{20/20})		
Acid value (NMT)	10.0		
Melting/Congeaing point			
Angular/Specific rotation			
Heavy metals (NMT)			
Solubility in ethanol			
Other requirements			
Identification*	IR :		
	MS :4		
	NMR :		

*References

- 1: Joint FAO/WHO Expert Committee on Food Additive (JECFA)
- 2: Food Chemicals Codex (FCC)
- 3: 有機化合物のスペクトルデータベース SDBS(独立行政法人産業技術総合研究所)
- 4: Wiley's Registry of Mass spectral Database
- 5: NIST/EPA/NIH Mass Spectral Library
- 6: Sigma-Aldrich