

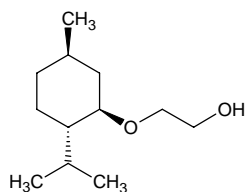
2-(l-menthoxy)ethanol

2-(l-メントキシ)エタノール

Formula C₁₂H₂₄O₂

Mol. Wt. 200.32

CAS No.



SEQ No. 脂肪族高級アルコール類

FEMA No. 4154

JECFA No. 1853

| | JFFMA | JECFA | FCC |
|---------------------------|---------------------------------------|-----------------------------------|-----|
| Chemical name | 2-(l-menthoxy)ethanol | 2-(l-Menthoxy)ethanol | |
| Content (NLT) | 99.0 % (GC) | 99 % | |
| Refractive index | 1.457-1.467 (n _{20D}) | 1.457-1.467 (n _{20D}) | |
| Specific gravity | 0.920-0.940 (d _{25/25}) | 0.920-0.940 (d _{25/25}) | |
| Acid value (NMT) | | | |
| Melting/Congeealing point | | | |
| Angular/Specific rotation | SR: -96 to -92° ([α] _{20D}) | | |
| Heavy metals (NMT) | | | |
| Solubility in ethanol | | Soluble | |
| Other requirements | | | |
| Identification* | IR : MS : NMR :1 | HNMR | |

*References

- 1: Joint FAO/WHO Expert Committee on Food Additive (JECFA)
- 2: Food Chemicals Codex (FCC)
- 3: 有機化合物のスペクトルデータベース SDBS(独立行政法人産業技術総合研究所)
- 4: Wiley's Registry of Mass spectral Database
- 5: NIST/EPA/NIH Mass Spectral Library
- 6: Sigma-Aldrich