

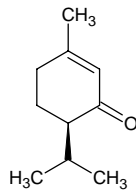
l-piperitone

l-ピペリトン

Formula C₁₀H₁₆O

Mol. Wt. 152.23

CAS No. 4573-50-6



SEQ No. 2183 ケトン類

FEMA No. 4200

JECFA No. 1856

	JFFMA	JECFA	FCC
Chemical name	l-piperitone	l-Piperitone	
Content (NLT)	92.0 % (GC)	99 %	
Refractive index	1.480-1.490 (n _{20D})	1.483-1.487 (n _{20D})	
Specific gravity	0.929-0.939 (d _{20/20})	0.929-0.934 (d _{25/25})	
Acid value (NMT)			
Melting/Congeealing point			
Angular/Specific rotation	AR: -60 to -50° (α 20D)		
Heavy metals (NMT)			
Solubility in ethanol		Soluble	
Other requirements			
Identification*	IR :1,3 MS :1,3 NMR :1,3	HNMR IR MS	

*References

- 1: Joint FAO/WHO Expert Committee on Food Additive (JECFA)
- 2: Food Chemicals Codex (FCC)
- 3: 有機化合物のスペクトルデータベース SDBS(独立行政法人産業技術総合研究所)
- 4: Wiley's Registry of Mass spectral Database
- 5: NIST/EPA/NIH Mass Spectral Library
- 6: Sigma-Aldrich