

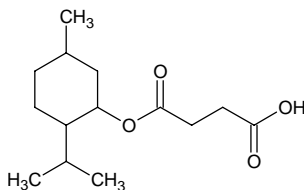
mono-menthyl succinate

モノメンチル サクシネート

Formula C₁₄H₂₄O₄

Mol. Wt. 256.34

CAS No. 77341-67-4



SEQ No. 1901 エステル類

FEMA No. 3810

JECFA No. 447

	JFFMA	JECFA	FCC
Chemical name	mono-menthyl succinate	mono-Menthyl succinate	
Content (NLT)	98.0 % (GC)	99.5 %	
Refractive index			
Specific gravity			
Acid value (NMT)			
Melting/Congeeing point	MP: 60 to 66°C	MP: 60 to 64°C	
Angular/Specific rotation		OR: - 65 to -61°	
Heavy metals (NMT)			
Solubility in ethanol		sparingly soluble	
Other requirements			
Identification*	IR : 1 MS : NMR :	IR	

*References

- 1: Joint FAO/WHO Expert Committee on Food Additive (JECFA)
- 2: Food Chemicals Codex (FCC)
- 3: 有機化合物のスペクトルデータベース SDBS(独立行政法人産業技術総合研究所)
- 4: Wiley's Registry of Mass spectral Database
- 5: NIST/EPA/NIH Mass Spectral Library
- 6: Sigma-Aldrich