

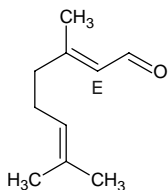
# geranial

## ゲラニアル

Formula C<sub>10</sub>H<sub>16</sub>O

Mol. Wt. 152.23

CAS No. 141-27-5



SEQ No. 992 脂肪族高級アルデヒド類

FEMA No. 2303

JECFA No. 1225

	JFFMA	JECFA	FCC
Chemical name	geranial	Citral	Citral
Content (NLT)	96.0 % (Chem)	96 % sum of cis- and trans- isomers	96.0 % sum of neral and geranial /GC(M-1b)
Refractive index	1.483-1.493 (n <sub>20</sub> D)	1.486-1.490 (n <sub>20</sub> D)	1.486-1.490 (n <sub>20</sub> D)
Specific gravity	0.880-0.894 (d <sub>20</sub> /20)	0.885-0.891 (d <sub>25</sub> /25)	0.885-0.891 (d <sub>25</sub> /25)
Acid value (NMT)	5.0	5	
Melting/Congeealing point			
Angular/Specific rotation			
Heavy metals (NMT)			
Solubility in ethanol		soluble	1 mL in 7 mL 70% alc
Other requirements			
Identification*	IR :1,2,6 MS :4,5 NMR :3,6	IR	IR

### \*References

- 1: Joint FAO/WHO Expert Committee on Food Additive (JECFA)
- 2: Food Chemicals Codex (FCC)
- 3: 有機化合物のスペクトルデータベース SDBS(独立行政法人産業技術総合研究所)
- 4: Wiley's Registry of Mass spectral Database
- 5: NIST/EPA/NIH Mass Spectral Library
- 6: Sigma-Aldrich