

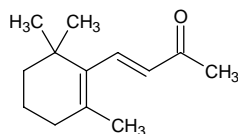
beta-ionone

β-イオノン

Formula C₁₃H₂₀O

Mol. Wt. 192.30

CAS No. 14901-07-6
79-77-6



SEQ No. 1282 ケトン類

FEMA No. 2595

JECFA No. 389

	JFFMA	JECFA	FCC
Chemical name	beta-ionone	beta-Ionone	β-Ionone
Content (NLT)	90.0 % (GC)	95 % Total content of ionones: >= 97%	97.0 % GC(M-1b)
Refractive index	1.508-1.525 (n _{20D})	1.517-1.522 (n _{20D})	1.517-1.522 (n _{20D})
Specific gravity	0.930-0.950 (d _{20/20})	0.940-0.947 (d _{25/25})	0.940-0.947 (d _{25/25})
Acid value (NMT)			
Melting/Congeealing point			
Angular/Specific rotation			
Heavy metals (NMT)			
Solubility in ethanol		1 ml in 3 ml 70% alcohol	1 mL in 1 mL 95% ethanol
Other requirements	SC:alpha: < 4%, pseudo ionones: < 2%		
Identification*	IR : 1,2,3,6 MS : 3,4,5 NMR : 3,6	IR	IR

*References

- 1: Joint FAO/WHO Expert Committee on Food Additive (JECFA)
- 2: Food Chemicals Codex (FCC)
- 3: 有機化合物のスペクトルデータベース SDBS(独立行政法人産業技術総合研究所)
- 4: Wiley's Registry of Mass spectral Database
- 5: NIST/EPA/NIH Mass Spectral Library
- 6: Sigma-Aldrich