

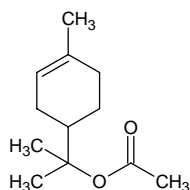
alpha-terpinyl acetate

α-テルピニル アセテート

Formula C₁₂H₂₀O₂

Mol. Wt. 196.29

CAS No. 80-26-2



SEQ No. 2326 エステル類

FEMA No. 3047

JECFA No. 368

	JFFMA	JECFA	FCC
Chemical name	alpha-terpinyl acetate	Terpinyl acetate	Terpinyl Acetate
Content (NLT)	97.0 % (Chem)	97.0 %	97.0 % sum of isomers /GC(M-1b)
Refractive index	1.461-1.467 (n _{20D})	1.464-1.467 (n _{20D})	1.464-1.467 (n _{20D})
Specific gravity	0.956-0.965 (d _{20/20})	0.953-0.962 (d _{25/25})	0.953-0.962 (d _{25/25})
Acid value (NMT)	1.0	0.7	
Melting/Congeealing point			
Angular/Specific rotation		OR: +40 to +80°	
Heavy metals (NMT)			
Solubility in ethanol		1 ml in 5 ml 70% alcohol	1 mL in 5 mL 70% alc remains in soln to 10 mL
Other requirements			
Identification*	IR : 1,2,3 MS : 3,4,5 NMR : 3	IR	IR

*References

- 1: Joint FAO/WHO Expert Committee on Food Additive (JECFA)
- 2: Food Chemicals Codex (FCC)
- 3: 有機化合物のスペクトルデータベース SDBS(独立行政法人産業技術総合研究所)
- 4: Wiley's Registry of Mass spectral Database
- 5: NIST/EPA/NIH Mass Spectral Library
- 6: Sigma-Aldrich