

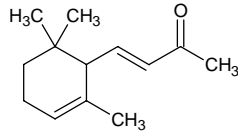
alpha-ionone

α-イオノン

Formula C₁₃H₂₀O

Mol. Wt. 192.30

CAS No. 127-41-3



SEQ No. 1281 ケトン類

FEMA No. 2594

JECFA No. 388

	JFFMA	JECFA	FCC
Chemical name	alpha-ionone	alpha-Ionone	α-Ionone
Content (NLT)	90.0 % (GC) sum of α-, β-, γ-ionone	85 % min. 95% sum of isomers	85.0 % 97.0% :sum of α-, β-, γ-, and δ-isomers /GC(M1-b)
Refractive index	1.493-1.522 (n ₂₀ D)	1.497-1.502 (n ₂₀ D)	1.497-1.502 (n ₂₀ D)
Specific gravity	0.924-0.948 (d ₂₀ /20)	0.927-0.933 (d ₂₅ /25)	0.927-0.933 (d ₂₅ /25)
Acid value (NMT)			
Melting/Congeaing point			
Angular/Specific rotation			
Heavy metals (NMT)			
Solubility in ethanol		1 ml in 3 ml 70% alcohol; 1 ml in 10 ml 60% alcohol	1 mL in 10 mL 60% alc
Other requirements			
Identification*	IR :1,2,3,6 MS :3,4,5 NMR :3,6	IR	IR

*References

- 1: Joint FAO/WHO Expert Committee on Food Additive (JECFA)
- 2: Food Chemicals Codex (FCC)
- 3: 有機化合物のスペクトルデータベース SDBS(独立行政法人産業技術総合研究所)
- 4: Wiley's Registry of Mass spectral Database
- 5: NIST/EPA/NIH Mass Spectral Library
- 6: Sigma-Aldrich