

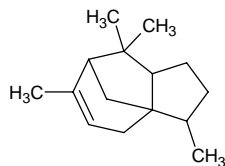
alpha-cedrene

α-セドレン

Formula C₁₅H₂₄

Mol. Wt. 204.35

CAS No. 469-61-4



SEQ No. 365 テルペン系炭化水素類

FEMA No.

JECFA No.

	JFFMA	JECFA	FCC
Chemical name	alpha-cedrene		
Content (NLT)	90.0 % (GC) sum of isomers		
Refractive index	1.496-1.509 (n _{20D})		
Specific gravity	0.929-0.939 (d ₂₀ /20)		
Acid value (NMT)			
Melting/Congeealing point			
Angular/Specific rotation			
Heavy metals (NMT)			
Solubility in ethanol			
Other requirements			
Identification*	IR : MS :4,5 NMR :		

*References

- 1: Joint FAO/WHO Expert Committee on Food Additive (JECFA)
- 2: Food Chemicals Codex (FCC)
- 3: 有機化合物のスペクトルデータベース SDBS(独立行政法人産業技術総合研究所)
- 4: Wiley's Registry of Mass spectral Database
- 5: NIST/EPA/NIH Mass Spectral Library
- 6: Sigma-Aldrich