

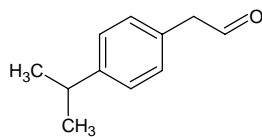
4-isopropylphenylacetaldehyde

4-イソプロピルフェニルアセトアルデヒド

Formula C₁₁H₁₄O

Mol. Wt. 162.23

CAS No. 4395-92-0



SEQ No. 芳香族アルデヒド類

FEMA No. 2954

JECFA No. 1024

	JFFMA	JECFA	FCC
Chemical name	4-isopropylphenyl acetaldehyde	p-Isopropylphenyl acetaldehyde	
Content (NLT)	97.0 % (GC)	97 %	
Refractive index	1.510-1.516 (n _{20D})	1.515-1.525 (n _{20D})	
Specific gravity	0.967-0.975 (d _{20/20})	0.965-0.975 (d _{25/25})	
Acid value (NMT)	1.0	3.0	
Melting/Congeealing point			
Angular/Specific rotation			
Heavy metals (NMT)			
Solubility in ethanol		Miscible at room temperature	
Other requirements			
Identification*	IR : MS :4 NMR :1	NMR	

*References

- 1: Joint FAO/WHO Expert Committee on Food Additive (JECFA)
- 2: Food Chemicals Codex (FCC)
- 3: 有機化合物のスペクトルデータベース SDBS(独立行政法人産業技術総合研究所)
- 4: Wiley's Registry of Mass spectral Database
- 5: NIST/EPA/NIH Mass Spectral Library
- 6: Sigma-Aldrich