

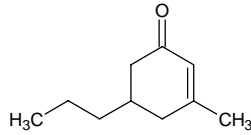
3-methyl-5-propyl-2-cyclohexenone

3-メチル-5-プロピル-2-シクロヘキセノン

Formula C₁₀H₁₆O

Mol. Wt. 152.23

CAS No. 3720-16-9



SEQ No. 369 ケトン類

FEMA No. 3577

JECFA No. 1113

	JFFMA	JECFA	FCC
Chemical name	3-methyl-5-propyl-2-cyclohexenone	3-Methyl-5-propyl-2-cyclohexen-1-one	
Content (NLT)	97.0 % (GC)	95 %	
Refractive index	1.480-1.486 (n _{20D})	1.481-1.486 (n _{20D})	
Specific gravity	0.925-0.931 (d _{20/20})	0.924-0.928 (d _{25/25})	
Acid value (NMT)			
Melting/Congeealing point			
Angular/Specific rotation			
Heavy metals (NMT)			
Solubility in ethanol		Miscible at room temperature	
Other requirements			
Identification*	IR : MS : NMR :1	NMR	

*References

- 1: Joint FAO/WHO Expert Committee on Food Additive (JECFA)
- 2: Food Chemicals Codex (FCC)
- 3: 有機化合物のスペクトルデータベース SDBS(独立行政法人産業技術総合研究所)
- 4: Wiley's Registry of Mass spectral Database
- 5: NIST/EPA/NIH Mass Spectral Library
- 6: Sigma-Aldrich