

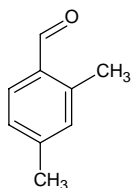
2,4-dimethylbenzaldehyde

2,4-ジメチルベンズアルデヒド

Formula C₉H₁₀O

Mol. Wt. 134.18

CAS No. 15764-16-6



SEQ No. 655 芳香族アルデヒド類

FEMA No. 3427

JECFA No. 869

	JFFMA	JECFA	FCC
Chemical name	2,4-dimethylbenzaldehyde	2,4-Dimethyl benzaldehyde	
Content (NLT)	97.0 % (GC)	95 %	
Refractive index	1.547-1.553 (n _{20D})	1.548-1.552 (n _{20D})	
Specific gravity	0.959-0.965 (d _{20/20})	0.992-1.017 (d _{25/25})	
Acid value (NMT)	10.0	2.0	
Melting/Congeealing point			
Angular/Specific rotation			
Heavy metals (NMT)			
Solubility in ethanol		miscible at room temperature	
Other requirements			
Identification*	IR : 3,5,6 MS : 3,4,5 NMR : 1,3,6	NMR	

*References

- 1: Joint FAO/WHO Expert Committee on Food Additive (JECFA)
- 2: Food Chemicals Codex (FCC)
- 3: 有機化合物のスペクトルデータベース SDBS(独立行政法人産業技術総合研究所)
- 4: Wiley's Registry of Mass spectral Database
- 5: NIST/EPA/NIH Mass Spectral Library
- 6: Sigma-Aldrich