

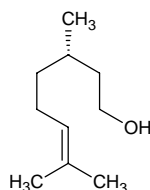
l-citronellol

l-シトロネロール

Formula C₁₀H₂₀O

Mol. Wt. 156.27

CAS No. 7540-51-4



SEQ No. 404 脂肪族高級アルコール類

FEMA No. 2309

JECFA No. 1219

	JFFMA	JECFA	FCC
Chemical name	l-citronellol	dl-Citronellol	Citronellol
Content (NLT)	95.0 % (GC)	90 % total alcohols as C ₁₀ H ₂₀ O	90.0 % total alc. as C ₁₀ H ₂₀ O /Chem(Appendix IV; 1.2g/78.13)
Refractive index	1.453-1.463 (n ₂₀ D)	1.454-1.462 (n ₂₀ D)	1.454-1.462 (n ₂₀ D)
Specific gravity	0.853-0.863 (d ₂₀ /20)	0.850-0.860 (d ₂₅ /25)	0.850-0.860 (d ₂₅ /25)
Acid value (NMT)		1	
Melting/Congeealing point			
Angular/Specific rotation	AR: -6 to -3° (α ₂₀ D)		
Heavy metals (NMT)			
Solubility in ethanol		soluble	1 mL in 2 mL 70% alc remains in soln to 10 mL
Other requirements		SC: di-unsaturated and saturated C ₁₀ alcohols, citronellyl acetate, citronellal	1.0% as citronellal. 1.0% as citronellyl acetate
Identification*	IR : 1,2,3,6 MS : 3,4,5 NMR : 3,6	IR	IR

*References

- 1: Joint FAO/WHO Expert Committee on Food Additive (JECFA)
- 2: Food Chemicals Codex (FCC)
- 3: 有機化合物のスペクトルデータベース SDBS(独立行政法人産業技術総合研究所)
- 4: Wiley's Registry of Mass spectral Database
- 5: NIST/EPA/NIH Mass Spectral Library
- 6: Sigma-Aldrich