

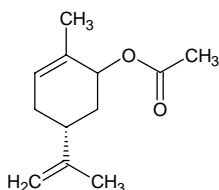
# l-carvyl acetate

## l-カルビル アセテート

Formula C<sub>12</sub>H<sub>18</sub>O<sub>2</sub>

Mol. Wt. 194.27

CAS No. 7053-79-4



SEQ No. 350 エステル類

FEMA No. 2250

JECFA No. 382

	JFFMA	JECFA	FCC
Chemical name	l-carvyl acetate	Carvyl acetate	L-Carvyl Acetate
Content (NLT)	95.0 % (GC) sum of isomers : cis- 60%, trans- 40%	98.0 %	98.0 % GC(M-1b)
Refractive index	1.471-1.481 (n <sub>20D</sub> )	1.473-1.479 (n <sub>20D</sub> )	1.473-1.479 (n <sub>20D</sub> )
Specific gravity	0.967-0.977 (d <sub>20/20</sub> )	0.964-0.970 (d <sub>25/25</sub> )	0.964-0.970 (d <sub>25/25</sub> )
Acid value (NMT)	1.0		1.0
Melting/Congeealing point			
Angular/Specific rotation	AR: -120 to -90° (α <sub>20D</sub> )	OR: -120 to -90°	AR: -120 to -90°
Heavy metals (NMT)			
Solubility in ethanol			
Other requirements			
Identification*	IR :1,2 MS :4 NMR :6	IR	IR

#### \*References

- 1: Joint FAO/WHO Expert Committee on Food Additive (JECFA)
- 2: Food Chemicals Codex (FCC)
- 3: 有機化合物のスペクトルデータベース SDBS(独立行政法人産業技術総合研究所)
- 4: Wiley's Registry of Mass spectral Database
- 5: NIST/EPA/NIH Mass Spectral Library
- 6: Sigma-Aldrich