

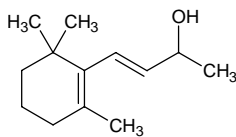
beta-ionol

β-イオノール

Formula C₁₃H₂₂O

Mol. Wt. 194.31

CAS No. 22029-76-1



SEQ No. 1280 脂肪族高級アルコール類

FEMA No. 3625

JECFA No. 392

| | JFFMA | JECFA | FCC |
|---------------------------|-----------------------------------|--|-----|
| Chemical name | beta-ionol | beta-Ionol | |
| Content (NLT) | 94.0 % (GC) | 92 % min. 99% ionol and ionone isomers | |
| Refractive index | 1.490-1.510 ((n ₂₅ D)) | 1.499 (n ₂₀ D) | |
| Specific gravity | 0.920-0.940 (d ₂₀ /20) | 0.927-0.933 (d ₂₅ /25) | |
| Acid value (NMT) | | | |
| Melting/Congeealing point | | | |
| Angular/Specific rotation | | | |
| Heavy metals (NMT) | | | |
| Solubility in ethanol | | | |
| Other requirements | | | |
| Identification* | IR :1 MS :4,5 NMR :1 | IR | |

*References

- 1: Joint FAO/WHO Expert Committee on Food Additive (JECFA)
- 2: Food Chemicals Codex (FCC)
- 3: 有機化合物のスペクトルデータベース SDBS(独立行政法人産業技術総合研究所)
- 4: Wiley's Registry of Mass spectral Database
- 5: NIST/EPA/NIH Mass Spectral Library
- 6: Sigma-Aldrich