

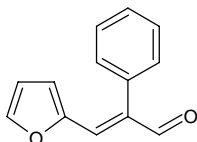
2-phenyl-3-(2-furyl)-2-propenal

3-(2-フリル)-2-フェニル-2-プロペナル

Formula C₁₃H₁₀O₂

Mol. Wt. 198.22

CAS No. 57568-60-2



SEQ No. 芳香族アルデヒド類

FEMA No. 3586

JECFA No. 1502

	JFFMA	JECFA	FCC
Chemical name	2-phenyl-3-(2-furyl)-2-propenal	2-Phenyl-3-(2-furyl)prop-2-enal	
Content (NLT)	95.0 % (GC)	99 %	
Refractive index			
Specific gravity			
Acid value (NMT)	10.0		
Melting/Congeeing point	MP: 49 to 53°C	MP: 56 to 57°C	
Angular/Specific rotation			
Heavy metals (NMT)			
Solubility in ethanol		Soluble	
Other requirements			
Identification*	IR :5 MS :4 NMR :1	NMR	

*References

- 1: Joint FAO/WHO Expert Committee on Food Additive (JECFA)
- 2: Food Chemicals Codex (FCC)
- 3: 有機化合物のスペクトルデータベース SDBS(独立行政法人産業技術総合研究所)
- 4: Wiley's Registry of Mass spectral Database
- 5: NIST/EPA/NIH Mass Spectral Library
- 6: Sigma-Aldrich