

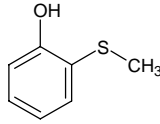
# 2-(methylthio)phenol

## 2-(メチルチオ)フェノール

Formula C<sub>7</sub>H<sub>8</sub>OS

Mol. Wt. 140.20

CAS No. 1073-29-6



SEQ No. 2393 フェノール類

FEMA No. 3210

JECFA No. 503

	JFFMA	JECFA	FCC
Chemical name	2-(methylthio)phenol	o-(Methylthio)phenol	
Content (NLT)	99.0 % (GC)	98 %	
Refractive index	1.587-1.596 (n <sub>20D</sub> )	1.575-1.584 (n <sub>20D</sub> )	
Specific gravity	1.154-1.165 (d <sub>20/20</sub> )	1.168-1.173 (d <sub>25/25</sub> )	
Acid value (NMT)			
Melting/Congeealing point			
Angular/Specific rotation			
Heavy metals (NMT)			
Solubility in ethanol			
Other requirements			
Identification*	IR : 1,5 MS : 4,5 NMR :	IR	

\*References

- 1: Joint FAO/WHO Expert Committee on Food Additive (JECFA)
- 2: Food Chemicals Codex (FCC)
- 3: 有機化合物のスペクトルデータベース SDBS(独立行政法人産業技術総合研究所)
- 4: Wiley's Registry of Mass spectral Database
- 5: NIST/EPA/NIH Mass Spectral Library
- 6: Sigma-Aldrich