

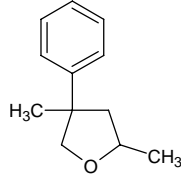
# 2,4-dimethyl-4-phenyltetrahydrofuran

## 2,4-ジメチル-4-フェニルテトラヒドロフラン

Formula C<sub>12</sub>H<sub>16</sub>O

Mol. Wt. 176.25

CAS No. 82461-14-1



SEQ No. 2527 エーテル類

FEMA No.

JECFA No.

	JFFMA	JECFA	FCC
Chemical name	2,4-dimethyl-4-phenyltetrahydrofuran		
Content (NLT)	93.0 % (GC)		
Refractive index	1.510-1.520 (n <sub>20D</sub> )		
Specific gravity	0.988-0.998 (d <sub>20/20</sub> )		
Acid value (NMT)			
Melting/Congeaing point			
Angular/Specific rotation			
Heavy metals (NMT)			
Solubility in ethanol			
Other requirements			
Identification*	IR :3		
	MS :3		
	NMR :3		

\*References

- 1: Joint FAO/WHO Expert Committee on Food Additive (JECFA)
- 2: Food Chemicals Codex (FCC)
- 3: 有機化合物のスペクトルデータベース SDBS(独立行政法人産業技術総合研究所)
- 4: Wiley's Registry of Mass spectral Database
- 5: NIST/EPA/NIH Mass Spectral Library
- 6: Sigma-Aldrich