

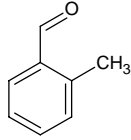
2-methylbenzaldehyde

2-メチルベンズアルデヒド

Formula C₈H₈O

Mol. Wt. 120.15

CAS No. 529-20-4



SEQ No. 2394 芳香族アルデヒド類

FEMA No. 3068

JECFA No. 866

	JFFMA	JECFA	FCC
Chemical name	2-methylbenzaldehyde	Tolualdehydes (mixed o,m,p)	p-Tolualdehyde
Content (NLT)	95.0 % (GC)	95 % sum of o,m,p- isomers	94.0 % Mixed Isomers, sum of three isomers GC(M-1b)
Refractive index	1.540-1.550 (n _{20D})	1.540-1.549 (n _{20D})	1.540-1.548 (n _{20D})
Specific gravity	1.034-1.044 (d _{20/20})	1.013-1.029 (d _{25/25})	1.019-1.029 (d _{25/25})
Acid value (NMT)	10.0	10.0	5.0
Melting/Congeealing point			
Angular/Specific rotation			
Heavy metals (NMT)			
Solubility in ethanol		miscible at room temperature	1 mL in 1 mL 95% alc
Other requirements			
Identification*	IR :1,2,3,6 MS :3,4,5 NMR :3	IR	IR

*References

- 1: Joint FAO/WHO Expert Committee on Food Additive (JECFA)
- 2: Food Chemicals Codex (FCC)
- 3: 有機化合物のスペクトルデータベース SDBS(独立行政法人産業技術総合研究所)
- 4: Wiley's Registry of Mass spectral Database
- 5: NIST/EPA/NIH Mass Spectral Library
- 6: Sigma-Aldrich