

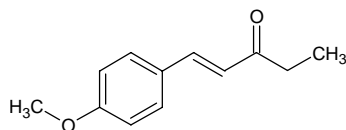
1-(4-methoxyphenyl)-1-penten-3-one

1-(4-メトキシフェニル)-1-ペンテン-3-オン

Formula C₁₂H₁₄O₂

Mol. Wt. 190.24

CAS No. 104-27-8



SEQ No. 1628 ケトン類

FEMA No. 2673

JECFA No. 826

	JFFMA	JECFA	FCC
Chemical name	1-(4-methoxyphenyl)-1-penten-3-one	1-(p-Methoxyphenyl)-1-penten-3-one	Ethone
Content (NLT)	95.0 % (GC)	98 %	98.0 % GC(M-1b)
Refractive index			
Specific gravity			
Acid value (NMT)			
Melting/Congeeing point	MP: 57 to 63°C	MP: 60°C	SP: min. 59.0°C
Angular/Specific rotation			
Heavy metals (NMT)			
Solubility in ethanol		very soluble	1 g in 7 mL 95% alc
Other requirements			
Identification*	IR : 1,2 MS : NMR :	IR	IR

*References

- 1: Joint FAO/WHO Expert Committee on Food Additive (JECFA)
- 2: Food Chemicals Codex (FCC)
- 3: 有機化合物のスペクトルデータベース SDBS(独立行政法人産業技術総合研究所)
- 4: Wiley's Registry of Mass spectral Database
- 5: NIST/EPA/NIH Mass Spectral Library
- 6: Sigma-Aldrich