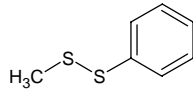


# methyl phenyl disulfide

## メチル フェニル ジスルフィド

Formula C<sub>7</sub>H<sub>8</sub>S<sub>2</sub>

Mol. Wt. 156.27



CAS No. 14173-25-2

SEQ No. 1701 チオエーテル類

FEMA No. 3872

JECFA No. 576

	JFFMA	JECFA	FCC
Chemical name	methyl phenyl disulfide	Methyl phenyl disulfide	
Content (NLT)	95.0 % (GC)	97 %	
Refractive index	1.613-1.623 (n <sub>20D</sub> )	1.610-1.619 (n <sub>20D</sub> )	
Specific gravity	1.146-1.166 (d <sub>20/20</sub> )	1.145-1.150 (d <sub>25/25</sub> )	
Acid value (NMT)			
Melting/Congeealing point			
Angular/Specific rotation			
Heavy metals (NMT)			
Solubility in ethanol			
Other requirements			
Identification*	IR : 1,5 MS : NMR :	IR	

### \*References

- 1: Joint FAO/WHO Expert Committee on Food Additive (JECFA)
- 2: Food Chemicals Codex (FCC)
- 3: 有機化合物のスペクトルデータベース SDBS(独立行政法人産業技術総合研究所)
- 4: Wiley's Registry of Mass spectral Database
- 5: NIST/EPA/NIH Mass Spectral Library
- 6: Sigma-Aldrich