

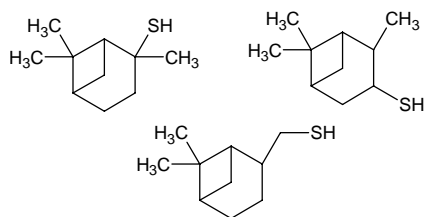
# (2or3or10)-mercaptopinane

## (2or3or10)-メルカプトピナン

Formula C<sub>10</sub>H<sub>18</sub>S

Mol. Wt. 170.31

CAS No. 23832-18-0



SEQ No. 1545 チオール類

FEMA No. 3503

JECFA No. 520

	JFFMA	JECFA	FCC
Chemical name	(2or3or10)-mercaptopinane	2, 3, or 10-Mercaptopinane	
Content (NLT)	97.0 % (GC) sum of isomers	95 %	
Refractive index	1.511-1.517 (n <sub>20D</sub> )	1.511-1.517 (n <sub>20D</sub> )	
Specific gravity	0.978-0.985 (d <sub>20/20</sub> )	0.980-0.988 (d <sub>25/25</sub> )	
Acid value (NMT)			
Melting/Congeaing point			
Angular/Specific rotation			
Heavy metals (NMT)			
Solubility in ethanol			
Other requirements		Contains approx. 54% 10-isomer, 31% 2-isomer, 10% 3-isomer	
Identification*	IR : 1,6 MS : NMR : 6	IR	

### \*References

- 1: Joint FAO/WHO Expert Committee on Food Additive (JECFA)
- 2: Food Chemicals Codex (FCC)
- 3: 有機化合物のスペクトルデータベース SDBS(独立行政法人産業技術総合研究所)
- 4: Wiley's Registry of Mass spectral Database
- 5: NIST/EPA/NIH Mass Spectral Library
- 6: Sigma-Aldrich