

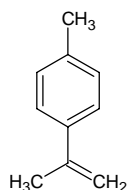
1-isopropenyl-4-methylbenzene

1-イソプロペニル-4-メチルベンゼン

Formula C₁₀H₁₂

Mol. Wt. 132.20

CAS No. 1195-32-0



SEQ No. 531 テルペン系炭化水素類

FEMA No. 3144

JECFA No. 1333

	JFFMA	JECFA	FCC
Chemical name	1-isopropenyl-4-methylbenzene	p,alpha-Dimethylstyrene	
Content (NLT)	94.0 % (GC)	97 %	
Refractive index	1.529-1.539 (n _{20D})	1.532-1.535 (n _{20D})	
Specific gravity	0.894-0.906 (d _{20/20})	0.846-0.854 (d _{25/25})	
Acid value (NMT)			
Melting/Congeealing point			
Angular/Specific rotation			
Heavy metals (NMT)			
Solubility in ethanol		Soluble	
Other requirements			
Identification*	IR :5,6 MS :4,5 NMR :1	NMR	

*References

- 1: Joint FAO/WHO Expert Committee on Food Additive (JECFA)
- 2: Food Chemicals Codex (FCC)
- 3: 有機化合物のスペクトルデータベース SDBS(独立行政法人産業技術総合研究所)
- 4: Wiley's Registry of Mass spectral Database
- 5: NIST/EPA/NIH Mass Spectral Library
- 6: Sigma-Aldrich