

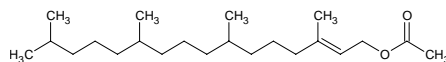
phytyl acetate

フィチル アセテート

Formula C₂₂H₄₂O₂

Mol. Wt. 338.57

CAS No. 10236-16-5



SEQ No. 2174 エステル類

FEMA No. 4197

JECFA No. 1833

	JFFMA	JECFA	FCC
Chemical name	phytyl acetate	(E,Z)-Phytyl acetate	
Content (NLT)	95.0 % (GC) sum of isomers	95 % E-isomer 67% and Z-isomer 32%	
Refractive index	1.451-1.461 (n _{20D})	1.451-1.461 (n _{20D})	
Specific gravity	0.869-0.879 (d _{20/20})	0.867-0.873 (d _{25/25})	
Acid value (NMT)	1.0	1.0	
Melting/Congeaing point			
Angular/Specific rotation			
Heavy metals (NMT)			
Solubility in ethanol		Soluble	
Other requirements			
Identification*	IR :3 MS :1,3 NMR :	MS	

*References

- 1: Joint FAO/WHO Expert Committee on Food Additive (JECFA)
- 2: Food Chemicals Codex (FCC)
- 3: 有機化合物のスペクトルデータベース SDBS(独立行政法人産業技術総合研究所)
- 4: Wiley's Registry of Mass spectral Database
- 5: NIST/EPA/NIH Mass Spectral Library
- 6: Sigma-Aldrich