

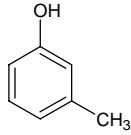
3-methylphenol

3-メチルフェノール

Formula C₇H₈O

Mol. Wt. 108.14

CAS No. 108-39-4



SEQ No. 420 フェノール類

FEMA No. 3530

JECFA No. 692

	JFFMA	JECFA	FCC
Chemical name	3-methylphenol	m-Cresol	
Content (NLT)	98.0 % (GC)	98 %	
Refractive index	1.537-1.543 (n _{20D})	1.537-1.543 (n _{20D})	
Specific gravity	1.032-1.038 (d _{20/20})	1.028-1.033 (d _{25/25})	
Acid value (NMT)			
Melting/Congeealing point			
Angular/Specific rotation			
Heavy metals (NMT)			
Solubility in ethanol		miscible	
Other requirements			
Identification*	IR : 1,3,5,6 MS : 3,4,5 NMR : 3,6	IR	

*References

- 1: Joint FAO/WHO Expert Committee on Food Additive (JECFA)
- 2: Food Chemicals Codex (FCC)
- 3: 有機化合物のスペクトルデータベース SDBS(独立行政法人産業技術総合研究所)
- 4: Wiley's Registry of Mass spectral Database
- 5: NIST/EPA/NIH Mass Spectral Library
- 6: Sigma-Aldrich