

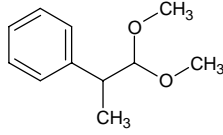
## 2-phenylpropanal dimethyl acetal

### 2-フェニルプロパナル ジメチル アセタール

Formula C<sub>11</sub>H<sub>16</sub>O<sub>2</sub>

Mol. Wt. 180.24

CAS No. 90-87-9



SEQ No. 1233 エーテル類

FEMA No. 2888

JECFA No. 1468

	JFFMA	JECFA	FCC
Chemical name	2-phenylpropanal dimethyl acetal	2-Phenylpropion aldehyde dimethyl acetal	2-Phenylpropionaldehyde Dimethyl Acetal
Content (NLT)	95.0 % (GC)	95 %	95.0 % GC(M-1b)
Refractive index	1.490-1.500 (n <sub>20D</sub> )	1.492-1.497 (n <sub>20D</sub> )	1.492-1.497 (n <sub>20D</sub> )
Specific gravity	0.990-1.000 (d <sub>20/20</sub> )	0.989-0.994 (d <sub>25/25</sub> )	0.989-0.994 (d <sub>25/25</sub> )
Acid value (NMT)	1.0	1	
Melting/Congeealing point			
Angular/Specific rotation			
Heavy metals (NMT)			
Solubility in ethanol		Soluble	1 mL in 7 mL 60% alc, and in 3 mL 70% alc gives clear solns
Other requirements			Free 2- Phenylpropionaldehyde 3.0% /GC(M-1b)
Identification*	IR : 1,2,5,6 MS : 4,5 NMR : 6	IR	IR

\*References

- 1: Joint FAO/WHO Expert Committee on Food Additive (JECFA)
- 2: Food Chemicals Codex (FCC)
- 3: 有機化合物のスペクトルデータベース SDBS(独立行政法人産業技術総合研究所)
- 4: Wiley's Registry of Mass spectral Database
- 5: NIST/EPA/NIH Mass Spectral Library
- 6: Sigma-Aldrich