

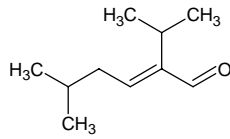
2-isopropyl-5-methyl-2-hexenal

2-イソプロピル-5-メチル-2-ヘキセナール

Formula C₁₀H₁₈O

Mol. Wt. 154.25

CAS No. 35158-25-9



SEQ No. 1435 脂肪族高級アルデヒド類

FEMA No. 3406

JECFA No. 1215

	JFFMA	JECFA	FCC
Chemical name	2-isopropyl-5-methyl-2-hexenal	2-Isopropyl-5-methyl-2-hexenal	5-Methyl-2-isopropyl-2-hexenal
Content (NLT)	95.0 % (GC) sum of isomers	95 %	90.0 % sum of isomers
Refractive index	1.446-1.456 (n _{20D})	1.448-1.454 (n _{20D})	1.448-1.454 (n _{20D})
Specific gravity	0.840-0.850 (d _{25/25})	0.840-0.846 (d _{25/25})	0.842-0.850 (d _{25/25})
Acid value (NMT)	10.0	3	
Melting/Congeealing point			
Angular/Specific rotation			
Heavy metals (NMT)			
Solubility in ethanol		soluble	
Other requirements			
Identification*	IR :6 MS :4,5 NMR :1	NMR	IR

*References

- 1: Joint FAO/WHO Expert Committee on Food Additive (JECFA)
- 2: Food Chemicals Codex (FCC)
- 3: 有機化合物のスペクトルデータベース SDBS(独立行政法人産業技術総合研究所)
- 4: Wiley's Registry of Mass spectral Database
- 5: NIST/EPA/NIH Mass Spectral Library
- 6: Sigma-Aldrich