

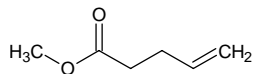
methyl 4-pentenoate

メチル 4-ペンテノエート

Formula C₆H₁₀O₂

Mol. Wt. 114.14

CAS No. 818-57-5



SEQ No. 2672 エステル類

FEMA No. 4353

JECFA No. 1616

	JFFMA	JECFA	FCC
Chemical name	methyl 4-pentenoate	Methyl 4-pentenoate	
Content (NLT)	95.0 % (GC)	95 %	
Refractive index	1.412-1.418 (n _{20D})	1.412-1.418 (n _{20D})	
Specific gravity	0.882-0.890 (d _{25/25})	0.882-0.890 (d _{25/25})	
Acid value (NMT)	1.0		
Melting/Congeealing point			
Angular/Specific rotation			
Heavy metals (NMT)			
Solubility in ethanol		Soluble	
Other requirements			
Identification*	IR : 3 MS : 1,3,4,5 NMR :	MS	

*References

- 1: Joint FAO/WHO Expert Committee on Food Additive (JECFA)
- 2: Food Chemicals Codex (FCC)
- 3: 有機化合物のスペクトルデータベース SDBS(独立行政法人産業技術総合研究所)
- 4: Wiley's Registry of Mass spectral Database
- 5: NIST/EPA/NIH Mass Spectral Library
- 6: Sigma-Aldrich