

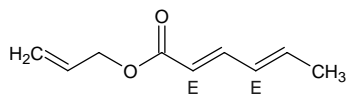
allyl sorbate

アリル ソルベート

Formula C₉H₁₂O₂

Mol. Wt. 152.19

CAS No. 7493-75-6



SEQ No. 128 エステル類

FEMA No. 2041

JECFA No. 8

	JFFMA	JECFA	FCC
Chemical name	allyl sorbate	Allyl sorbate	
Content (NLT)	92.0 % (GC)	99.0 %	
Refractive index	1.500-1.512 (n _{20D})	1.506 (n _{20D})	
Specific gravity	0.943-0.953 (d _{20/20})	0.945-0.947 (d _{25/25})	
Acid value (NMT)	1.0		
Melting/Congeealing point			
Angular/Specific rotation			
Heavy metals (NMT)			
Solubility in ethanol		Soluble in ethanol	
Other requirements			
Identification*	IR : 1 MS : NMR :	IR	

*References

- 1: Joint FAO/WHO Expert Committee on Food Additive (JECFA)
- 2: Food Chemicals Codex (FCC)
- 3: 有機化合物のスペクトルデータベース SDBS(独立行政法人産業技術総合研究所)
- 4: Wiley's Registry of Mass spectral Database
- 5: NIST/EPA/NIH Mass Spectral Library
- 6: Sigma-Aldrich