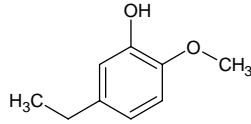


5-ethyl-2-methoxyphenol

5-エチル-2-メキシフェノール

Formula C₉H₁₂O₂

Mol. Wt. 152.19



CAS No.

SEQ No. フェノール類

FEMA No.

JECFA No.

	JFFMA	JECFA	FCC
Chemical name	5-ethyl-2-methoxyphenol		
Content (NLT)	98.0 % (GC)		
Refractive index	1.524–1.534 (n _{20D})		
Specific gravity	1.062–1.068 (d _{20/20})		
Acid value (NMT)			
Melting/Congeealing point			
Angular/Specific rotation			
Heavy metals (NMT)			
Solubility in ethanol			
Other requirements			
Identification*	IR : 5,6		
	MS : 4,5		
	NMR : 6		

*References

- 1: Joint FAO/WHO Expert Committee on Food Additive (JECFA)
- 2: Food Chemicals Codex (FCC)
- 3: 有機化合物のスペクトルデータベース SDBS(独立行政法人産業技術総合研究所)
- 4: Wiley's Registry of Mass spectral Database
- 5: NIST/EPA/NIH Mass Spectral Library
- 6: Sigma-Aldrich