

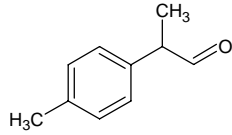
2-(4-methylphenyl)propanal

2-(4-メチルフェニル)プロパナール

Formula C₁₀H₁₂O

Mol. Wt. 148.20

CAS No. 99-72-9



SEQ No. 1847 芳香族アルデヒド類

FEMA No. 3078

JECFA No. 1471

	JFFMA	JECFA	FCC
Chemical name	2-(4-methylphenyl)propanal	2-(p-Tolyl)propionaldehyde	
Content (NLT)	95.0 % (Chem)	95 %	
Refractive index	1.509-1.519 (n _{20D})	1.513-1.517 (n _{20D})	
Specific gravity	0.979-0.989 (d _{20/20})	0.979-0.985 (d _{25/25})	
Acid value (NMT)	5.0	5	
Melting/Congeealing point			
Angular/Specific rotation			
Heavy metals (NMT)			
Solubility in ethanol		Soluble	
Other requirements			
Identification*	IR :5 MS :5 NMR :1	NMR	

*References

- 1: Joint FAO/WHO Expert Committee on Food Additive (JECFA)
- 2: Food Chemicals Codex (FCC)
- 3: 有機化合物のスペクトルデータベース SDBS(独立行政法人産業技術総合研究所)
- 4: Wiley's Registry of Mass spectral Database
- 5: NIST/EPA/NIH Mass Spectral Library
- 6: Sigma-Aldrich