

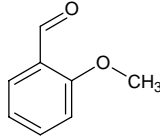
# 2-methoxybenzaldehyde

## 2-メトキシベンズアルデヒド

Formula C<sub>8</sub>H<sub>8</sub>O<sub>2</sub>

Mol. Wt. 136.15

CAS No. 135-02-4



SEQ No. 179 芳香族アルデヒド類

FEMA No. 4077

JECFA No. 2062

	JFFMA	JECFA	FCC
Chemical name	2-methoxybenzaldehyde	o-Anisaldehyde	
Content (NLT)	97.0 % (GC)	97 %	
Refractive index			
Specific gravity			
Acid value (NMT)	5.0		
Melting/Congeealing point	CP: 34 to 40°C	MP: 34 to 40°C	
Angular/Specific rotation			
Heavy metals (NMT)			
Solubility in ethanol		Soluble	
Other requirements			
Identification*	IR : 1,3,5,6 MS : 1,3,4,5 NMR : 1,3,6	HNMR IR MS	

\*References

- 1: Joint FAO/WHO Expert Committee on Food Additive (JECFA)
- 2: Food Chemicals Codex (FCC)
- 3: 有機化合物のスペクトルデータベース SDBS(独立行政法人産業技術総合研究所)
- 4: Wiley's Registry of Mass spectral Database
- 5: NIST/EPA/NIH Mass Spectral Library
- 6: Sigma-Aldrich