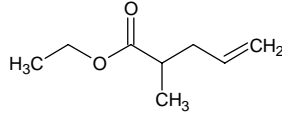


# ethyl 2-methyl-4-pentenoate

## エチル 2-メチル-4-ペンテノエート

Formula C<sub>8</sub>H<sub>14</sub>O<sub>2</sub>

Mol. Wt. 142.20



CAS No. 53399-81-8

SEQ No. 765 エステル類

FEMA No. 3489

JECFA No. 351

	JFFMA	JECFA	FCC
Chemical name	ethyl 2-methyl-4-pentenoate	Ethyl 2-methyl-4-pentenoate	
Content (NLT)	93.0 % (GC)	98.0 %	
Refractive index	1.412-1.422 (n <sub>20D</sub> )	1.415-1.421 (n <sub>20D</sub> )	
Specific gravity	0.883-0.893 (d <sub>20/20</sub> )	0.891 (d <sub>25/25</sub> )	
Acid value (NMT)	1.0		
Melting/Congeealing point			
Angular/Specific rotation			
Heavy metals (NMT)			
Solubility in ethanol			
Other requirements			
Identification*	IR : 1,5,6 MS : NMR : 6	IR	

### \*References

- 1: Joint FAO/WHO Expert Committee on Food Additive (JECFA)
- 2: Food Chemicals Codex (FCC)
- 3: 有機化合物のスペクトルデータベース SDBS(独立行政法人産業技術総合研究所)
- 4: Wiley's Registry of Mass spectral Database
- 5: NIST/EPA/NIH Mass Spectral Library
- 6: Sigma-Aldrich