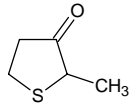


2-methyltetrahydrothiophen-3-one

2-メチルテトラヒドロチオフェン-3-オン

Formula C₅H₈OS

Mol. Wt. 116.18



CAS No. 13679-85-1

SEQ No. 1863 ケトン類

FEMA No. 3512

JECFA No. 499

	JFFMA	JECFA	FCC
Chemical name	2-methyltetrahydrothiophen-3-one	2-Methyltetrahydrothiophen-3-one	
Content (NLT)	97.0 % (GC)	99 %	
Refractive index	1.505-1.512 (n _{20D})	1.510-1.520 (n _{20D})	
Specific gravity	1.118-1.128 (d _{20/20})	0.958-0.970 (d _{25/25})	
Acid value (NMT)			
Melting/Congeealing point			
Angular/Specific rotation			
Heavy metals (NMT)			
Solubility in ethanol			
Other requirements			
Identification*	IR :1,6 MS :3,4,5 NMR :6	IR	

*References

- 1: Joint FAO/WHO Expert Committee on Food Additive (JECFA)
- 2: Food Chemicals Codex (FCC)
- 3: 有機化合物のスペクトルデータベース SDBS(独立行政法人産業技術総合研究所)
- 4: Wiley's Registry of Mass spectral Database
- 5: NIST/EPA/NIH Mass Spectral Library
- 6: Sigma-Aldrich