

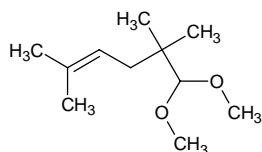
2,2,5-trimethyl-4-hexenal dimethyl acetal

2,2,5-トリメチル-4-ヘキセナール ジメチル アセタール

Formula C₁₁H₂₂O₂

Mol. Wt. 186.29

CAS No.



SEQ No. 2423 エーテル類

FEMA No.

JECFA No.

	JFFMA	JECFA	FCC
Chemical name	2,2,5-trimethyl-4-hexenal dimethyl acetal		
Content (NLT)	98.0 % (GC)		
Refractive index	1.437-1.443 (n _{20D})		
Specific gravity	0.876-0.882 (d ₂₀ /20)		
Acid value (NMT)	5.0		
Melting/Congeaing point			
Angular/Specific rotation			
Heavy metals (NMT)			
Solubility in ethanol			
Other requirements			
Identification*	IR :3		
	MS :3		
	NMR :3		

*References

- 1: Joint FAO/WHO Expert Committee on Food Additive (JECFA)
- 2: Food Chemicals Codex (FCC)
- 3: 有機化合物のスペクトルデータベース SDBS(独立行政法人産業技術総合研究所)
- 4: Wiley's Registry of Mass spectral Database
- 5: NIST/EPA/NIH Mass Spectral Library
- 6: Sigma-Aldrich