

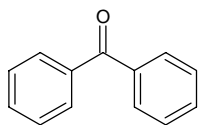
benzophenone

ベンゾフェノン

Formula C₁₃H₁₀O

Mol. Wt. 182.22

CAS No. 119-61-9



SEQ No. 209 ケトン類

FEMA No. 2134

JECFA No. 831

	JFFMA	JECFA	FCC
Chemical name	benzophenone	Benzophenone	Benzophenone
Content (NLT)	98.0 % (GC)	98 %	98.0 % GC(M-1a)
Refractive index			
Specific gravity			
Acid value (NMT)			
Melting/Congeeing point	MP: 47 to 52°C	MP: 48°C	SP: NLT 47°C
Angular/Specific rotation			
Heavy metals (NMT)			Lead : 10mg/kg
Solubility in ethanol		very soluble	1 g in 10 mL 80% alc.
Other requirements			Chlorinated Cmpds.- passes test
Identification*	IR : 1,2,3,5,6 MS : 3,4,5 NMR : 3,6	IR	IR

*References

- 1: Joint FAO/WHO Expert Committee on Food Additive (JECFA)
- 2: Food Chemicals Codex (FCC)
- 3: 有機化合物のスペクトルデータベース SDBS(独立行政法人産業技術総合研究所)
- 4: Wiley's Registry of Mass spectral Database
- 5: NIST/EPA/NIH Mass Spectral Library
- 6: Sigma-Aldrich