

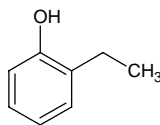
2-ethylphenol

2-エチルフェノール

Formula C₈H₁₀O

Mol. Wt. 122.16

CAS No. 90-00-6



SEQ No. 931 フェノール類

FEMA No.

JECFA No.

	JFFMA	JECFA	FCC
Chemical name	2-ethylphenol		
Content (NLT)	98.0 % (GC)		
Refractive index	1.534-1.540 (n _{20D})		
Specific gravity	1.018-1.024 (d _{20/20})		
Acid value (NMT)			
Melting/Congeealing point			
Angular/Specific rotation			
Heavy metals (NMT)			
Solubility in ethanol			
Other requirements			
Identification*	IR : 3,5,6		
	MS : 3,4,5		
	NMR : 3,6		

*References

- 1: Joint FAO/WHO Expert Committee on Food Additive (JECFA)
- 2: Food Chemicals Codex (FCC)
- 3: 有機化合物のスペクトルデータベース SDBS(独立行政法人産業技術総合研究所)
- 4: Wiley's Registry of Mass spectral Database
- 5: NIST/EPA/NIH Mass Spectral Library
- 6: Sigma-Aldrich