

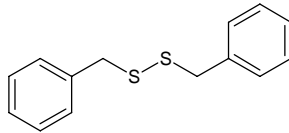
dibenzyl disulfide

ジベンジル ジスルフィド

Formula C₁₄H₁₄S₂

Mol. Wt. 246.39

CAS No. 150-60-7



SEQ No. 537 チオエーテル類

FEMA No. 3617

JECFA No. 579

	JFFMA	JECFA	FCC
Chemical name	dibenzyl disulfide	Benzyl disulfide	
Content (NLT)	98.0 % (GC)	98 %	
Refractive index			
Specific gravity			
Acid value (NMT)			
Melting/Congeeing point	MP: 69 to 73°C	MP: 71 to 74°C	
Angular/Specific rotation			
Heavy metals (NMT)			
Solubility in ethanol			
Other requirements			
Identification*	IR : 1,3,5 MS : 3,4,5 NMR : 3.6	IR	

*References

- 1: Joint FAO/WHO Expert Committee on Food Additive (JECFA)
- 2: Food Chemicals Codex (FCC)
- 3: 有機化合物のスペクトルデータベース SDBS(独立行政法人産業技術総合研究所)
- 4: Wiley's Registry of Mass spectral Database
- 5: NIST/EPA/NIH Mass Spectral Library
- 6: Sigma-Aldrich