

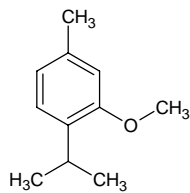
methyl thymol ether

メチル チモール エーテル

Formula C₁₁H₁₆O

Mol. Wt. 164.24

CAS No. 1076-56-8



SEQ No. 2391 フェノールエーテル類

FEMA No. 3436

JECFA No. 1246

	JFFMA	JECFA	FCC
Chemical name	methyl thymol ether	1-Methyl-3-methoxy-4-isopropylbenzene	
Content (NLT)	98.0 % (GC)	98 %	
Refractive index	1.503-1.509 (n _{20D})	1.504-1.508 (n _{20D})	
Specific gravity	0.934-0.940 (d _{20/20})	0.936-0.940 (d _{25/25})	
Acid value (NMT)		1	
Melting/Congeealing point			
Angular/Specific rotation			
Heavy metals (NMT)			
Solubility in ethanol		soluble	
Other requirements			
Identification*	IR : MS :4,5 NMR :1	NMR	

*References

- 1: Joint FAO/WHO Expert Committee on Food Additive (JECFA)
- 2: Food Chemicals Codex (FCC)
- 3: 有機化合物のスペクトルデータベース SDBS(独立行政法人産業技術総合研究所)
- 4: Wiley's Registry of Mass spectral Database
- 5: NIST/EPA/NIH Mass Spectral Library
- 6: Sigma-Aldrich