

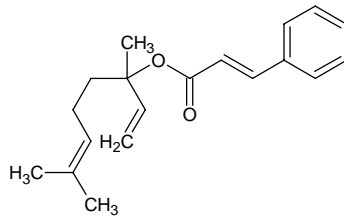
linalyl cinnamate

リナリル シンナメート

Formula C₁₉H₂₄O₂

Mol. Wt. 284.39

CAS No. 78-37-5



SEQ No. 1479 エステル類

FEMA No. 2641

JECFA No. 668

	JFFMA	JECFA	FCC
Chemical name	linalyl cinnamate	Linalyl cinnamate	
Content (NLT)	94.0 % (GC)	94 %	
Refractive index	1.538-1.548 (n _{20D})	1.540-1.545 (n _{20D})	
Specific gravity	0.987-0.997 (d _{20/20})	0.985-0.995 (d _{25/25})	
Acid value (NMT)	5.0	6	
Melting/Congeealing point			
Angular/Specific rotation			
Heavy metals (NMT)			
Solubility in ethanol		miscible	
Other requirements		SC: linalool	
Identification*	IR : 1 MS : NMR :	IR	

*References

- 1: Joint FAO/WHO Expert Committee on Food Additive (JECFA)
- 2: Food Chemicals Codex (FCC)
- 3: 有機化合物のスペクトルデータベース SDBS(独立行政法人産業技術総合研究所)
- 4: Wiley's Registry of Mass spectral Database
- 5: NIST/EPA/NIH Mass Spectral Library
- 6: Sigma-Aldrich