

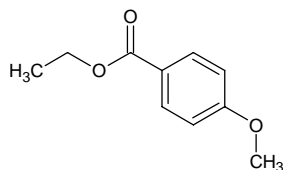
ethyl 4-methoxybenzoate

エチル 4-メトキシベンゾエート

Formula C₁₀H₁₂O₃

Mol. Wt. 180.20

CAS No. 94-30-4



SEQ No. 814 エステル類

FEMA No. 2420

JECFA No. 885

	JFFMA	JECFA	FCC
Chemical name	ethyl 4-methoxybenzoate	Ethyl p-anisate	Ethyl p-Anisate
Content (NLT)	97.0 % (GC)	97 %	97.0 % GC(M-1b)
Refractive index	1.522-1.528 (n _{20D})	1.522-1.528 (n _{20D})	1.522-1.526 (n _{20D})
Specific gravity	1.101-1.108 (d _{20/20})	1.101-1.105 (d _{25/25})	1.101-1.104 (d _{25/25})
Acid value (NMT)	1.0	1.0	1.0
Melting/Congeeing point			
Angular/Specific rotation			
Heavy metals (NMT)			
Solubility in ethanol		miscible at room temperature	1 mL in 7 mL 60% alc gives clear soln
Other requirements			
Identification*	IR :1,2,3 MS :3,4,5 NMR :3,6	IR	IR

*References

- 1: Joint FAO/WHO Expert Committee on Food Additive (JECFA)
- 2: Food Chemicals Codex (FCC)
- 3: 有機化合物のスペクトルデータベース SDBS(独立行政法人産業技術総合研究所)
- 4: Wiley's Registry of Mass spectral Database
- 5: NIST/EPA/NIH Mass Spectral Library
- 6: Sigma-Aldrich