

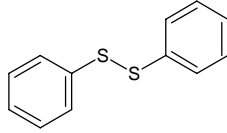
# diphenyl disulfide

## ジフェニル ジスルフィド

Formula C<sub>12</sub>H<sub>10</sub>S<sub>2</sub>

Mol. Wt. 218.34

CAS No. 882-33-7



SEQ No. 2136 チオエーテル類

FEMA No. 3225

JECFA No. 578

	JFFMA	JECFA	FCC
Chemical name	diphenyl disulfide	Phenyl disulfide	
Content (NLT)	98.0 % (GC)	98 %	
Refractive index			
Specific gravity		1.353 (20°C)	
Acid value (NMT)			
Melting/Congeeing point	MP: 58 to 62°C	MP: 61 to 62°C	
Angular/Specific rotation			
Heavy metals (NMT)			
Solubility in ethanol			
Other requirements			
Identification*	IR :1 MS :4,5 NMR :	IR	

### \*References

- 1: Joint FAO/WHO Expert Committee on Food Additive (JECFA)
- 2: Food Chemicals Codex (FCC)
- 3: 有機化合物のスペクトルデータベース SDDB(独立行政法人産業技術総合研究所)
- 4: Wiley's Registry of Mass spectral Database
- 5: NIST/EPA/NIH Mass Spectral Library
- 6: Sigma-Aldrich