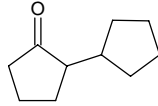


# 2-cyclopentylcyclopentanone

## 2-シクロペンチルシクロペンタノン

Formula C<sub>10</sub>H<sub>16</sub>O

Mol. Wt. 152.23



CAS No. 4884-24-6

SEQ No. 474 ケトン類

FEMA No. 4514

JECFA No. 2050

	JFFMA	JECFA	FCC
Chemical name	2-cyclopentyl cyclopentanone	2-Cyclopentyl cyclopentanone	
Content (NLT)	97.0 % (GC)	97 %	
Refractive index	1.475-1.481 (n <sub>20D</sub> )	1.475-1.481 (n <sub>20D</sub> )	
Specific gravity	0.975-0.983 (d <sub>20/20</sub> )	0.975-0.983 (20°C)	
Acid value (NMT)			
Melting/Congeealing point			
Angular/Specific rotation			
Heavy metals (NMT)			
Solubility in ethanol		Soluble	
Other requirements			
Identification*	IR :3 MS :1,3,4,5 NMR :3	MS	

### \*References

- 1: Joint FAO/WHO Expert Committee on Food Additive (JECFA)
- 2: Food Chemicals Codex (FCC)
- 3: 有機化合物のスペクトルデータベース SDBS(独立行政法人産業技術総合研究所)
- 4: Wiley's Registry of Mass spectral Database
- 5: NIST/EPA/NIH Mass Spectral Library
- 6: Sigma-Aldrich