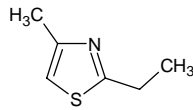


2-ethyl-4-methylthiazole

2-エチル-4-メチルチアゾール

Formula C₆H₉NS

Mol. Wt. 127.21



CAS No. 15679-12-6

SEQ No. 792 チオエーテル類

FEMA No. 3680

JECFA No. 1044

	JFFMA	JECFA	FCC
Chemical name	2-ethyl-4-methylthiazole	2-Ethyl-4-methylthiazole	
Content (NLT)	98.0 % (GC)	97 %	
Refractive index	1.498-1.510 (n _{20D})	1.500-1.510 (n _{20D})	
Specific gravity	1.020-1.032 (d _{20/20})	1.026-1.031 (d _{25/25})	
Acid value (NMT)			
Melting/Congeealing point			
Angular/Specific rotation			
Heavy metals (NMT)			
Solubility in ethanol		Miscible at room temperature	
Other requirements			
Identification*	IR : 1,3,6 MS : 1,3,4,5 NMR : 1,3,6	MS IR NMR	

*References

- 1: Joint FAO/WHO Expert Committee on Food Additive (JECFA)
- 2: Food Chemicals Codex (FCC)
- 3: 有機化合物のスペクトルデータベース SDBS(独立行政法人産業技術総合研究所)
- 4: Wiley's Registry of Mass spectral Database
- 5: NIST/EPA/NIH Mass Spectral Library
- 6: Sigma-Aldrich